

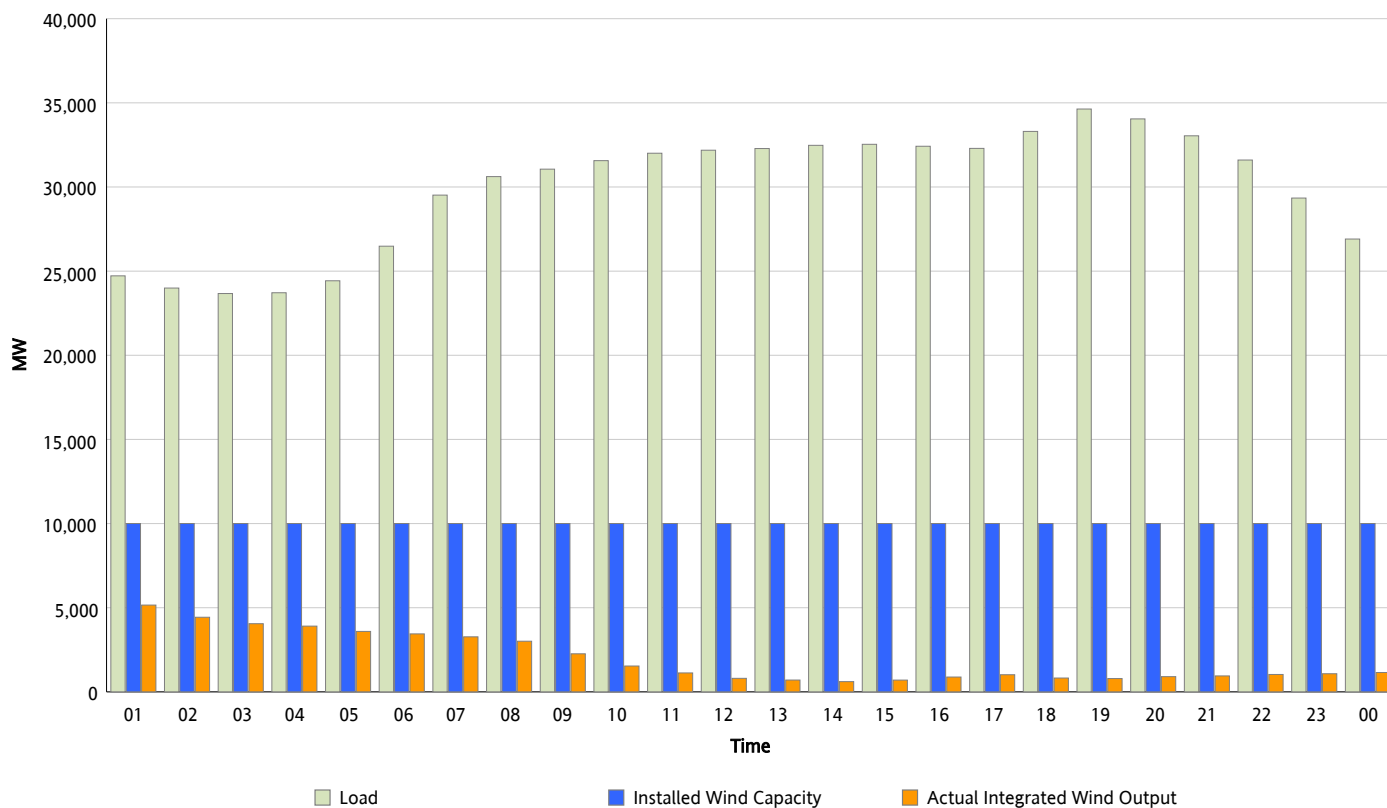


## ERCOT Grid Operations

### Wind Integration Report : 11/19/2012

Peak Load	34,633 MW
Load Peak Hour (HE)	19
Wind Over Peak	791 MW
Wind Record 11/10/12	8,521 MW
Max Wind Value*	5,572 MW
Wind Peak Time	00:00
Wind Integration %	22.07 %

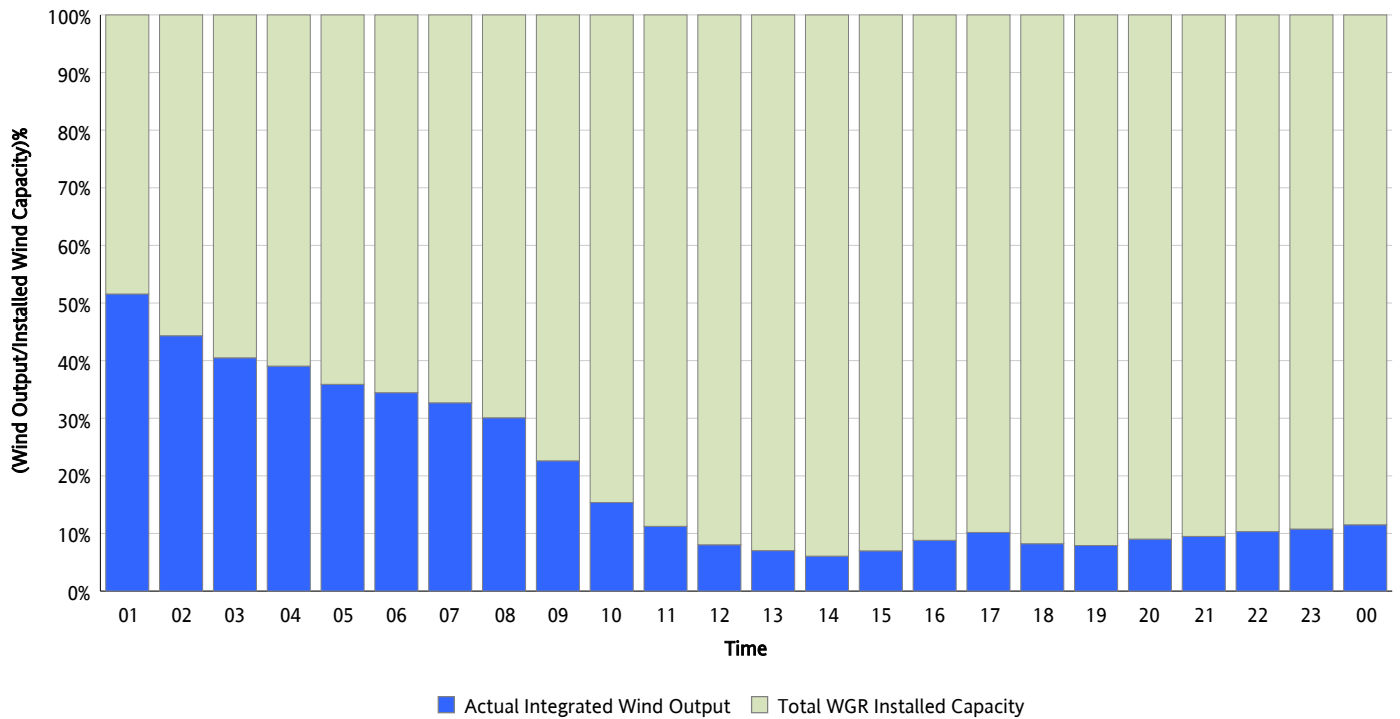
**Hourly Average Actual Load vs. Actual Wind Output**  
11/19/2012



\* Wind Record and Wind Max represent instantaneous values and the rest of the values are integrated over the hour

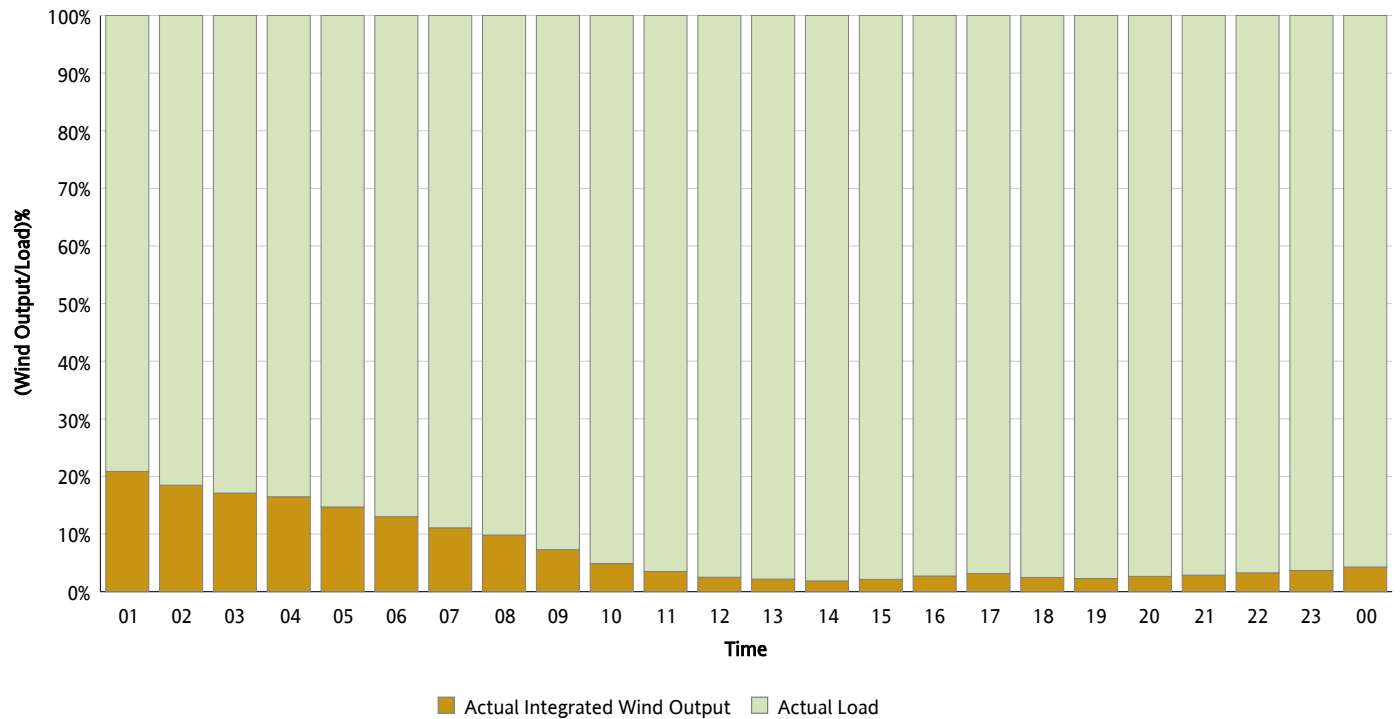
## Actual Wind Output as a Percentage of the Total Installed Wind Capacity

11/19/2012



## Actual Wind Output as a Percentage of the ERCOT Load

11/19/2012



## ERCOT Load vs. Actual Wind Output

11/12/2012 - 11/19/2012

